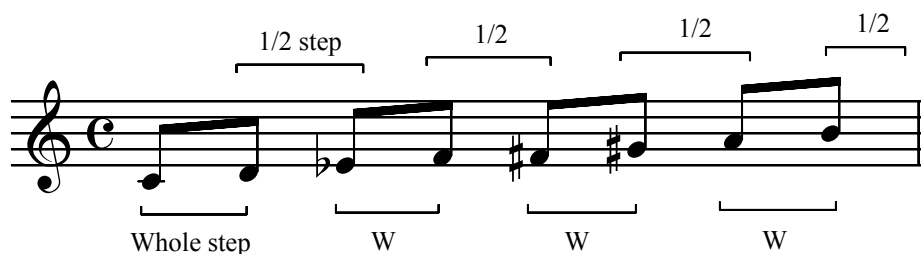


Diminished Scales and Arpeggios



Because this is a symmetrical scale, and repeats the pattern of "whole step / half step" every minor third (or step and a half), the same notes are used in Eb, F#, and A diminished scales. Since this one scale has accounted for four of the keys, it stands to reason that there be only two more scales to cover the rest. One starting on C#, and one on D:



Same notes are used in E, G, and Bb diminished scales



Same notes are used in F, Ab, and B diminished scales

The arpeggios for diminished scales outline a stack of minor thirds. The three arpeggios are written in two octaves below:

